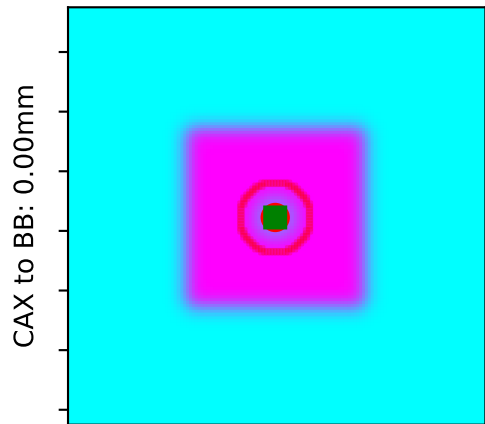


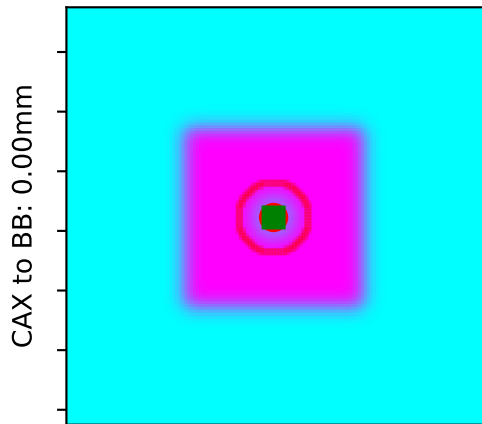
# BB 'Left,Down,In': Left 20mm, Down 20mm, In 60mm

WL G=0, C=0, P=0; Field=(20, 20)mm (shifts=((0, 0, 0), (20, -20, 60))); BB=5mm @ left=20.00, in=-60.00, up=-20.00; Gantry tilt=0, Gantry sag=0.dcm



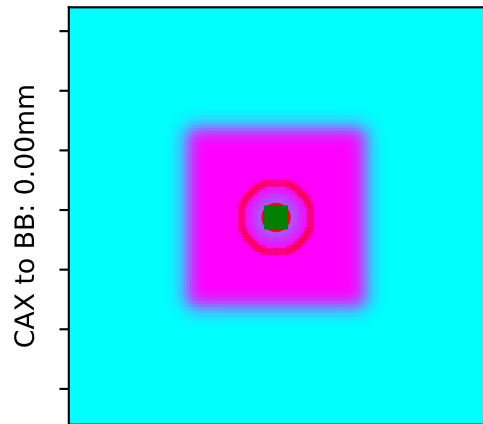
G=0, B=0, P=0

WL G=90, C=0, P=0; Field=(20, 20)mm (shifts=((0, 0, 0), (20, -20, 60))); BB=5mm @ left=20.00, in=-60.00, up=-20.00; Gantry tilt=0, Gantry sag=0.dcm



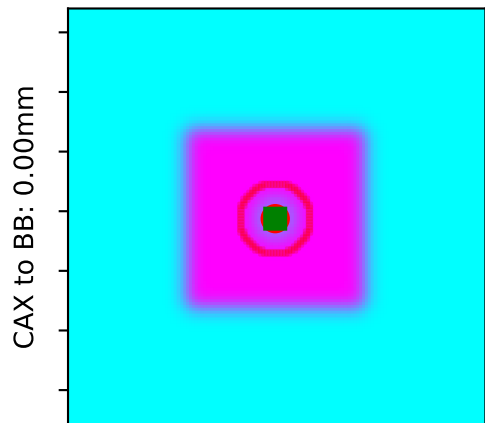
G=90, B=0, P=0

WL G=180, C=0, P=0; Field=(20, 20)mm (shifts=((0, 0, 0), (20, -20, 60))); BB=5mm @ left=20.00, in=-60.00, up=-20.00; Gantry tilt=0, Gantry sag=0.dcm



G=180, B=0, P=0

WL G=270, C=0, P=0; Field=(20, 20)mm (shifts=((0, 0, 0), (20, -20, 60))); BB=5mm @ left=20.00, in=-60.00, up=-20.00; Gantry tilt=0, Gantry sag=0.dcm



G=270, B=0, P=0